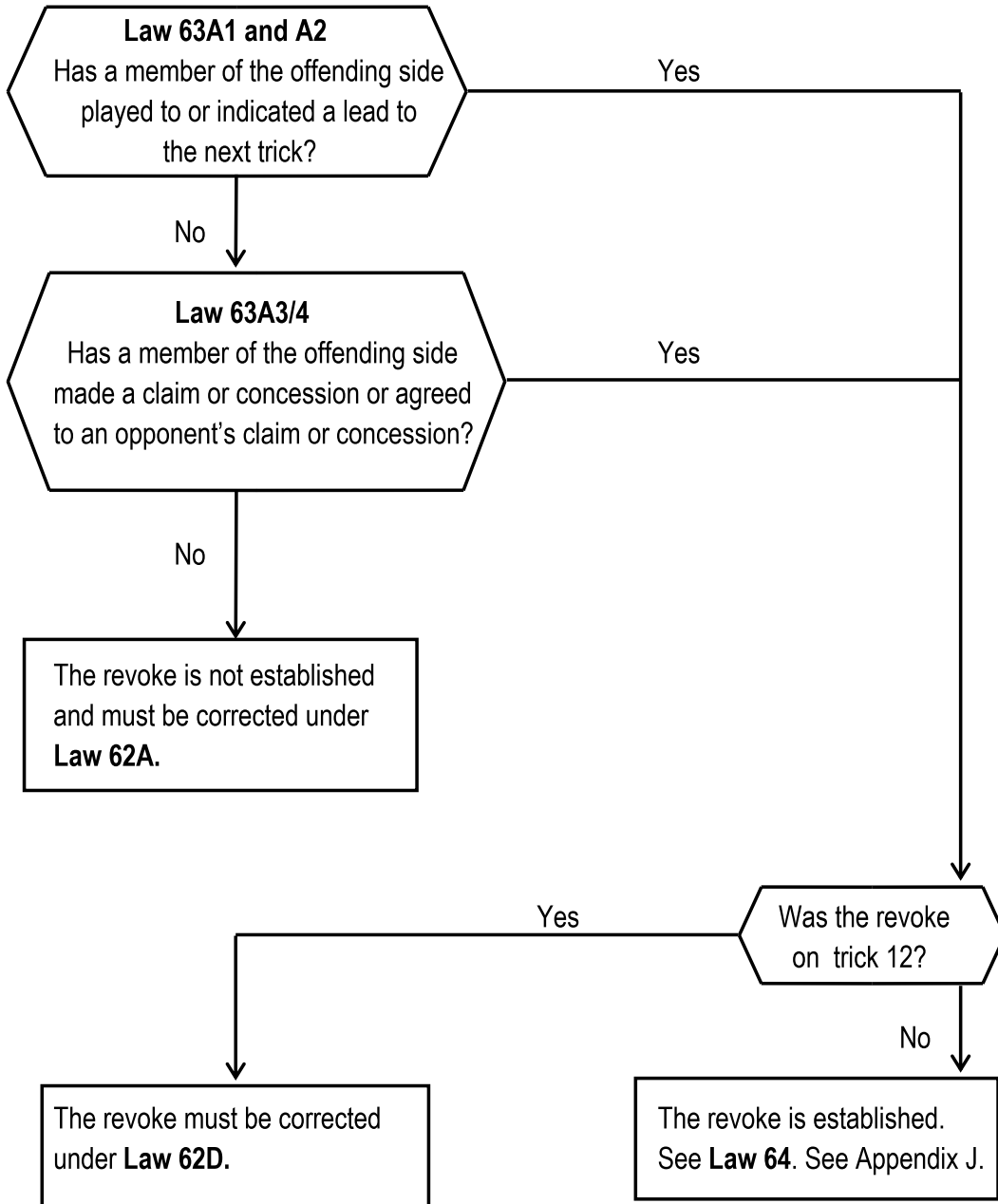
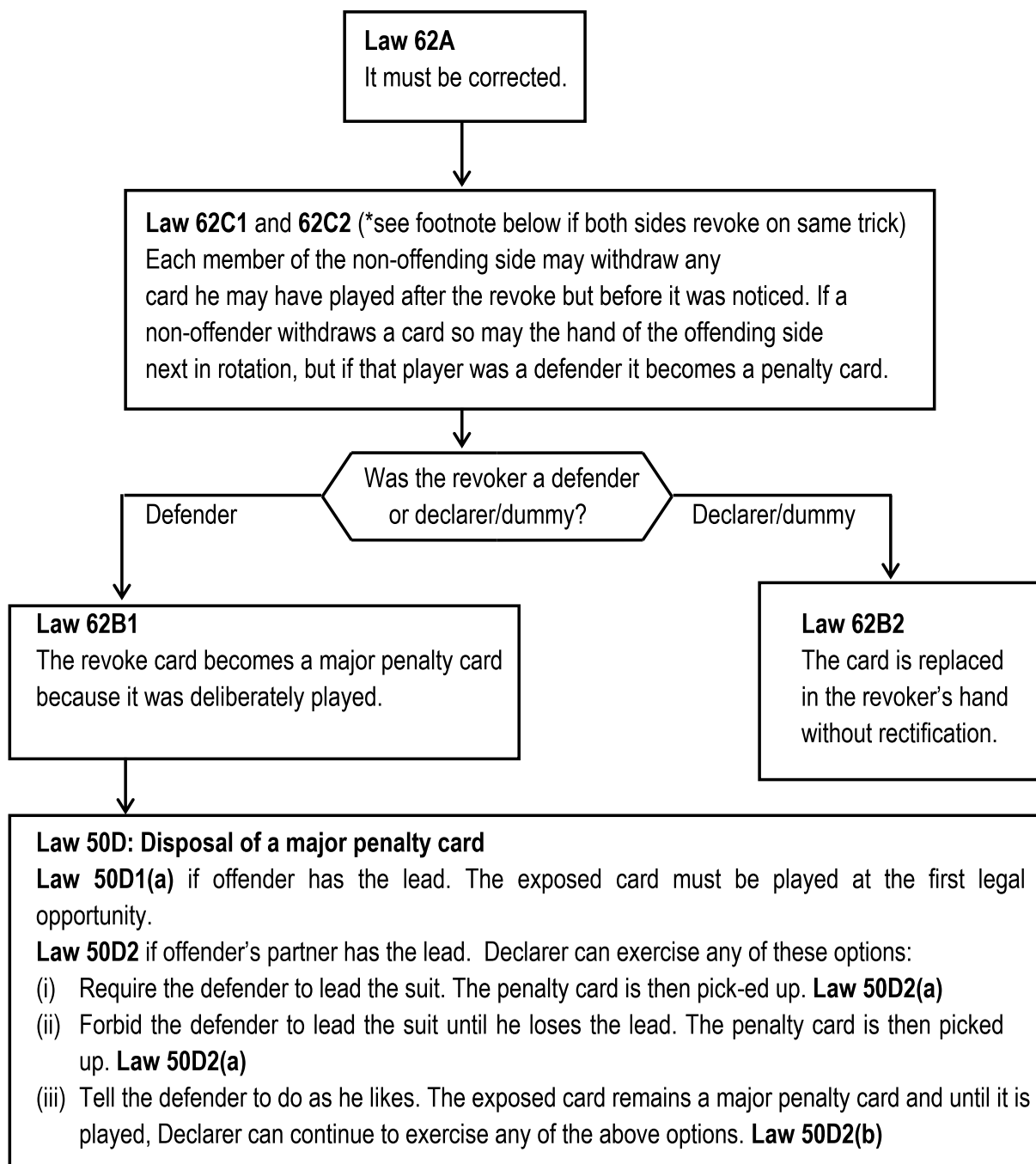


APPENDIX G: PROCEDURE AFTER A REVOKE



APPENDIX H: LAW 62 – CORRECTION OF A REVOKE THAT IS NOT ESTABLISHED



* Law 62C3 If both sides revoke on the same trick and only one side has played to the subsequent trick, then both revokes must be corrected (See Law 16C2 Unauthorised Information). Every card withdrawn by the defending side becomes a Major Penalty Card.

APPENDIX J: LAW 64 – PROCEDURE AFTER THE ESTABLISHMENT OF A REVOKE

